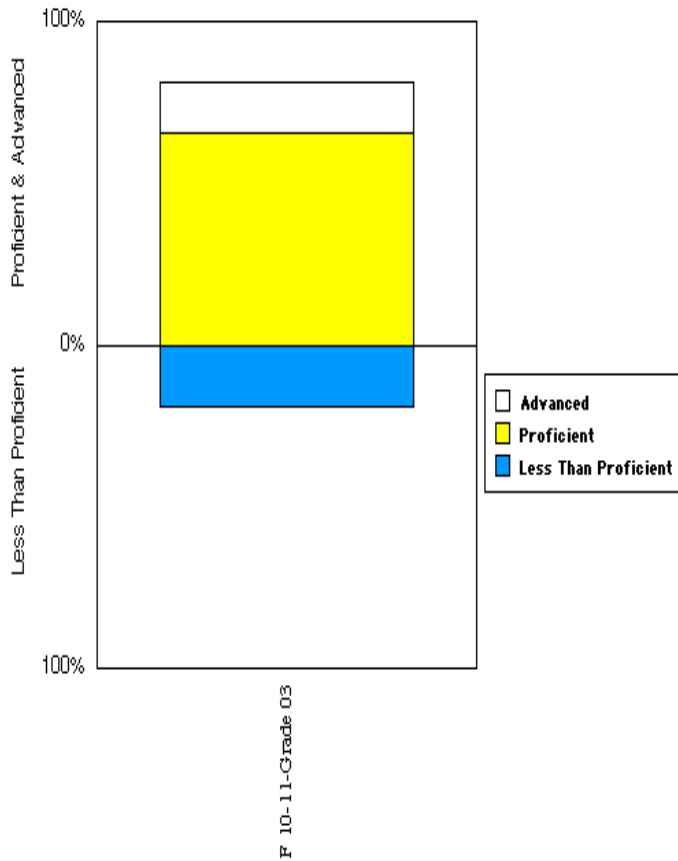


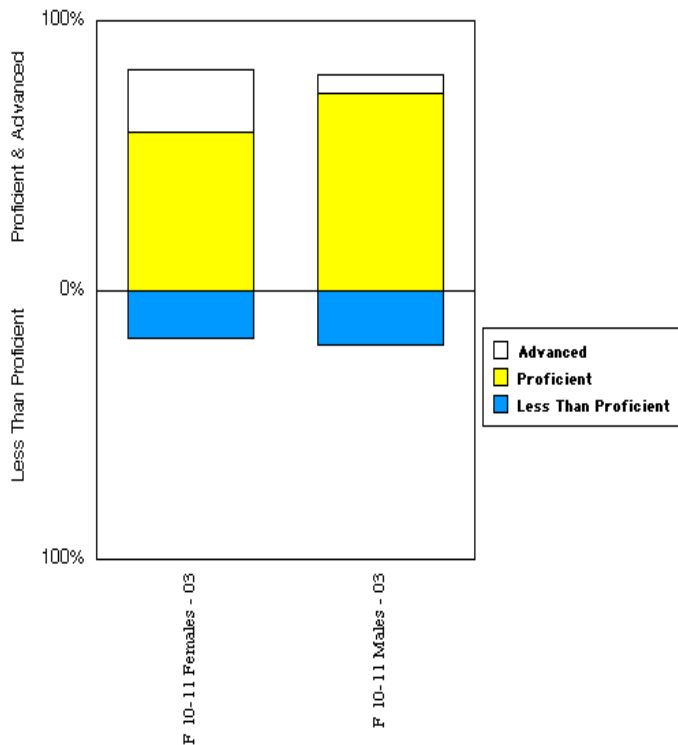
Student Proficiency Graph  
 Ed-Co - District-Wide  
 ITBS/ITED Reading Comprehension  
 Grade 03 All Students  
 Students in District for Full Academic Year



This graph indicates the percent of 2010-11 3<sup>rd</sup> grade students who were not proficient (below the 41<sup>st</sup> percentile), those who were proficient (the 41<sup>st</sup> through 89<sup>th</sup> percentiles) and those who were advanced (90<sup>th</sup> percentile and above) in reading comprehension. These are all third grade students who had been in the Ed-Co system for at least one year.

19% not proficient  
 66% proficient  
 16% advanced

Student Proficiency Graph  
 Ed-Co - District-Wide  
 ITBS/ITED Reading Comprehension  
 Grade 03 by Gender  
 Students in District for Full Academic Year



This graph represents a comparison between 3<sup>rd</sup> grade boys and girls. The bar on the left is for the girls, and the one on the right for boys.

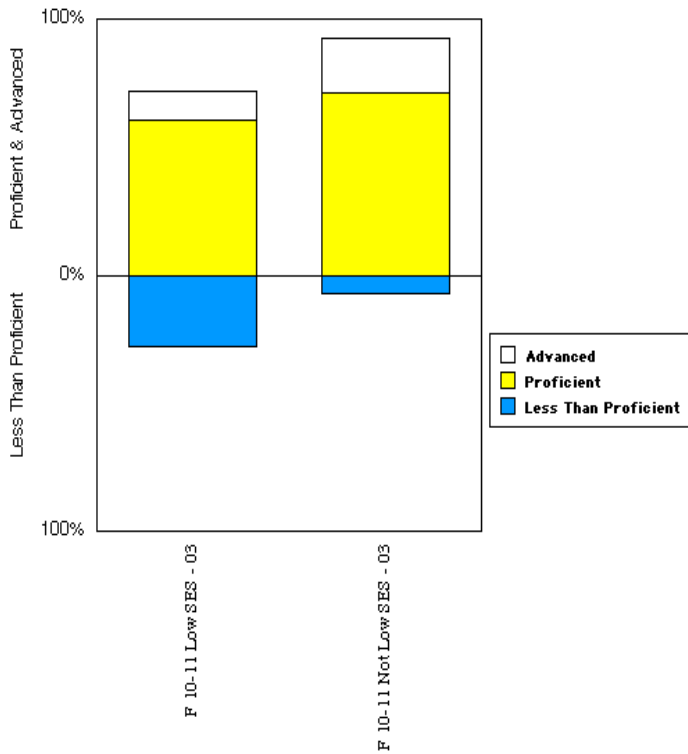
Girls

18% not proficient  
 59% proficient  
 23% advanced

Boys

20% not proficient  
 73% proficient  
 7% advanced

Student Proficiency Graph  
 Ed-Co - District-Wide  
 ITBS/ITED Reading Comprehension  
 Grade 03 by Socioeconomic Status  
 Students in District for Full Academic Year



This graph separates the 3<sup>rd</sup> grade students who qualify for free or reduced-priced meals from those who do not. The bar on the left is the students who qualify as low SES.

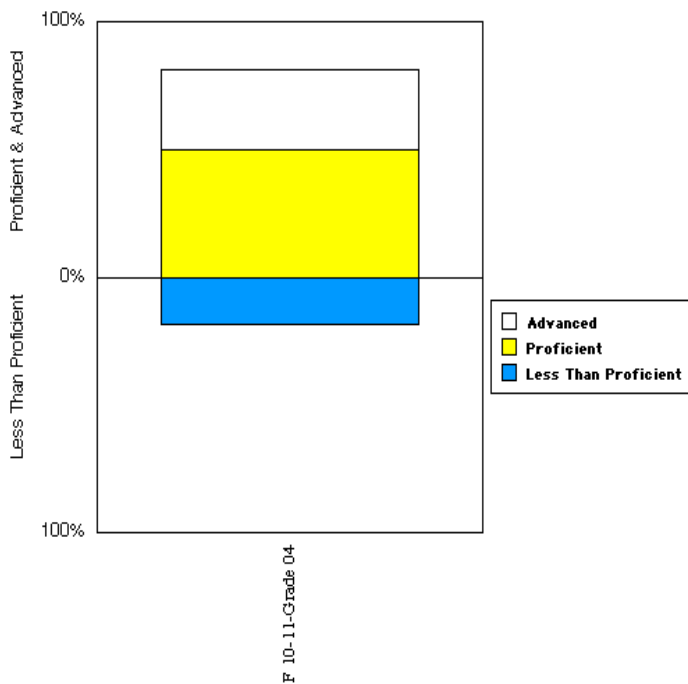
Low SES

28% not proficient  
 61% proficient  
 11% advanced

Not low SES

7% not proficient  
 71% proficient  
 21% advanced

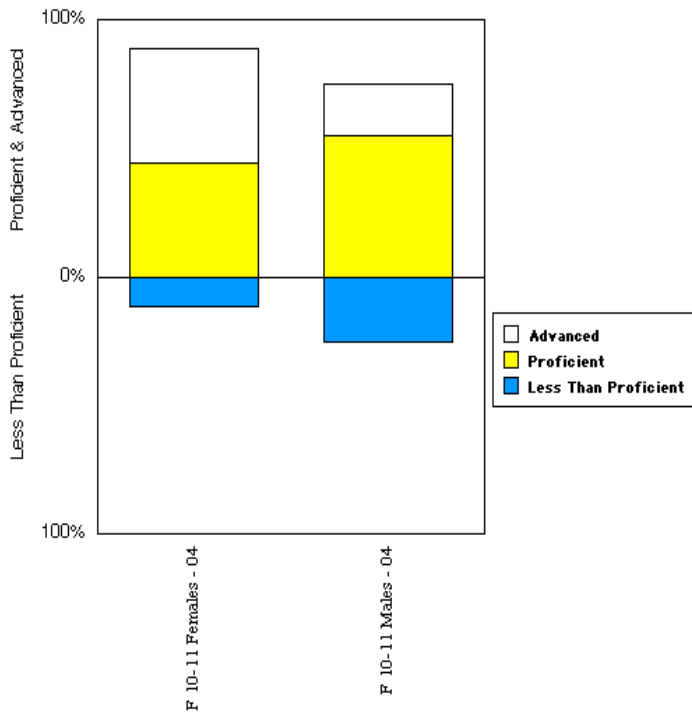
Student Proficiency Graph  
 Ed-Co - District-Wide  
 ITBS/ITED Reading Comprehension  
 Grade 04 All Students  
 Students in District for Full Academic Year



This graph represents all 2010-11 4<sup>th</sup> grade students' reading comprehension proficiency breakdown.

18% not proficient  
 50% proficient  
 32% advanced

Student Proficiency Graph  
 Ed-Co - District-Wide  
 ITBS/ITED Reading Comprehension  
 Grade 04 by Gender  
 Students in District for Full Academic Year



4<sup>th</sup> grade students' reading comprehension by gender.

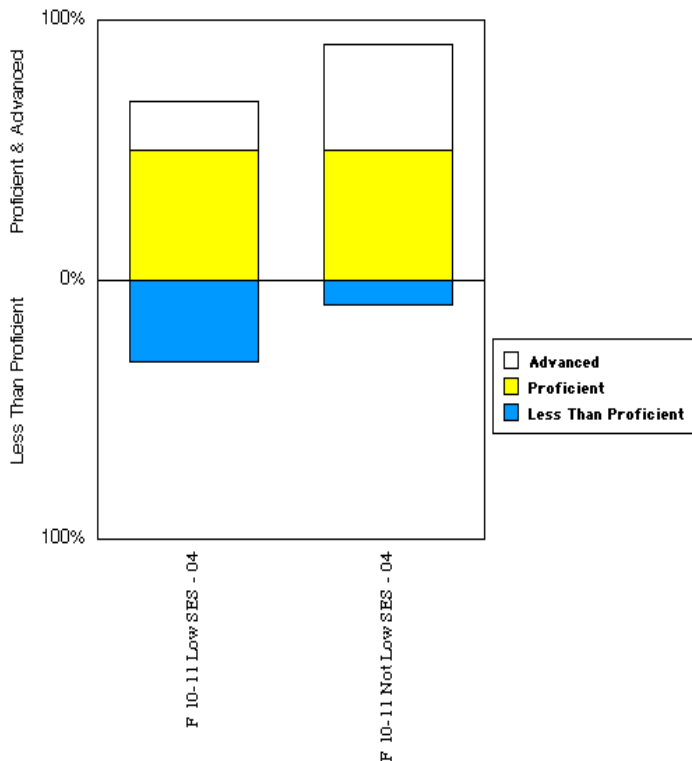
Girls

11% not proficient  
 44% proficient  
 44% advanced

Boys

25% not proficient  
 55% proficient  
 20% advanced

Student Proficiency Graph  
 Ed-Co - District-Wide  
 ITBS/ITED Reading Comprehension  
 Grade 04 by Socioeconomic Status  
 Students in District for Full Academic Year



4<sup>th</sup> grade students' reading comprehension by socioeconomic status.

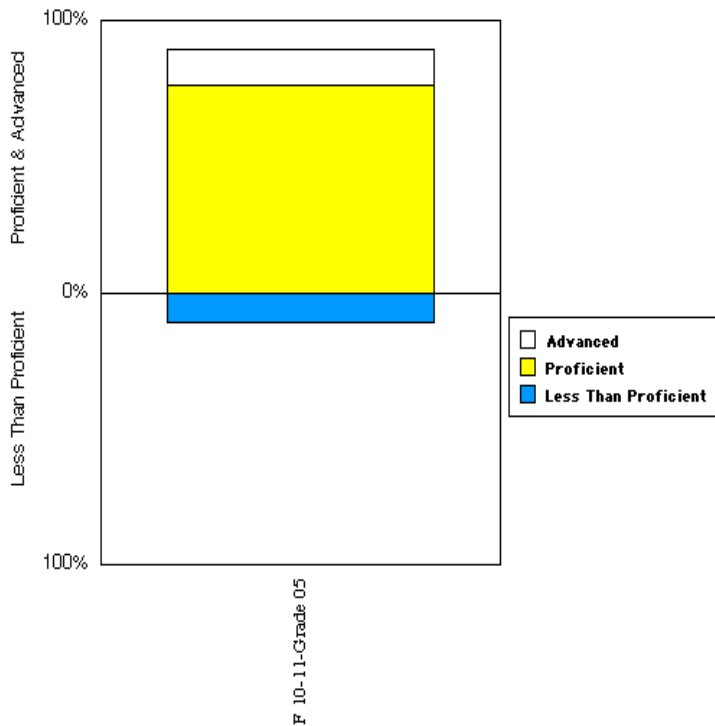
Low SES

31% not proficient  
 50% proficient  
 19% advanced

Not low SES

9% not proficient  
 50% proficient  
 41% advanced

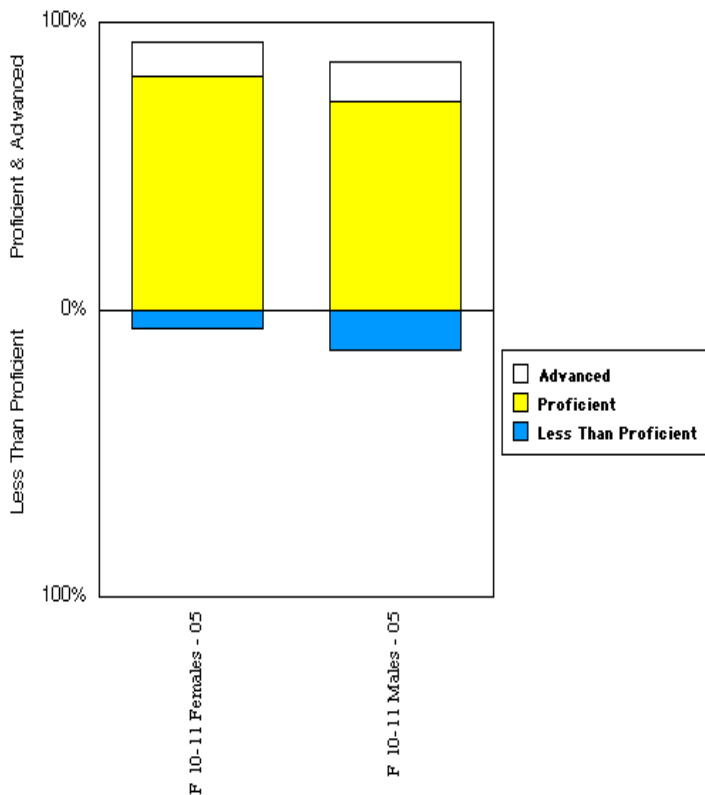
Student Proficiency Graph  
 Ed-Co - District-Wide  
 ITBS/ITED Reading Comprehension  
 Grade 05 All Students  
 Students in District for Full Academic Year



This graph represents all 2010-11 5<sup>th</sup> grade students' reading comprehension proficiency breakdown.

11% not proficient  
 76% proficient  
 13% advanced

Student Proficiency Graph  
 Ed-Co - District-Wide  
 ITBS/ITED Reading Comprehension  
 Grade 05 by Gender  
 Students in District for Full Academic Year

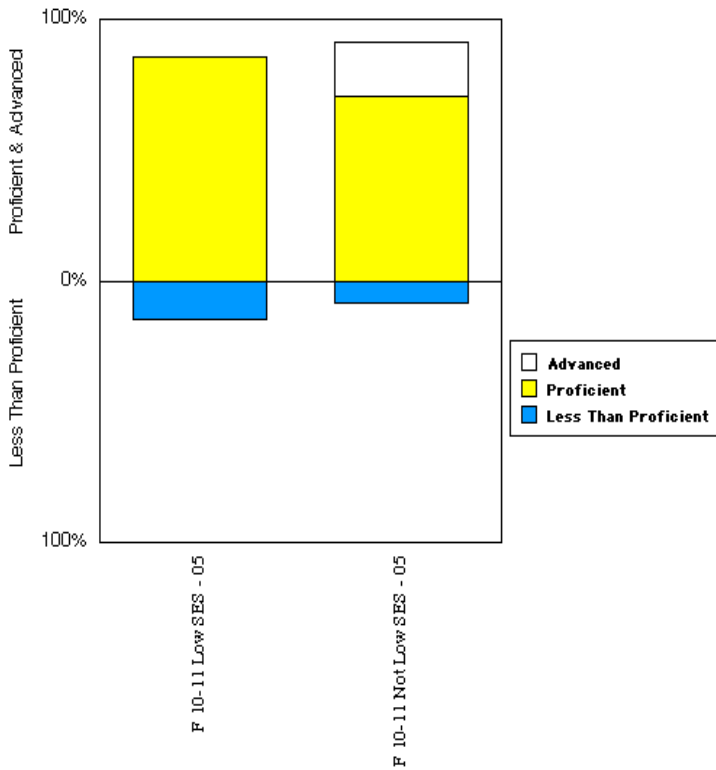


5<sup>th</sup> grade reading comprehension by gender.

Girls  
 6% not proficient  
 81% proficient  
 13% advanced

Boys  
 14% not proficient  
 73% proficient  
 14% advanced

**Student Proficiency Graph**  
**Ed-Co - District-Wide**  
**ITBS/ITED Reading Comprehension**  
**Grade 05 by Socioeconomic Status**  
**Students in District for Full Academic Year**



5<sup>th</sup> grade reading comprehension by socioeconomic status.

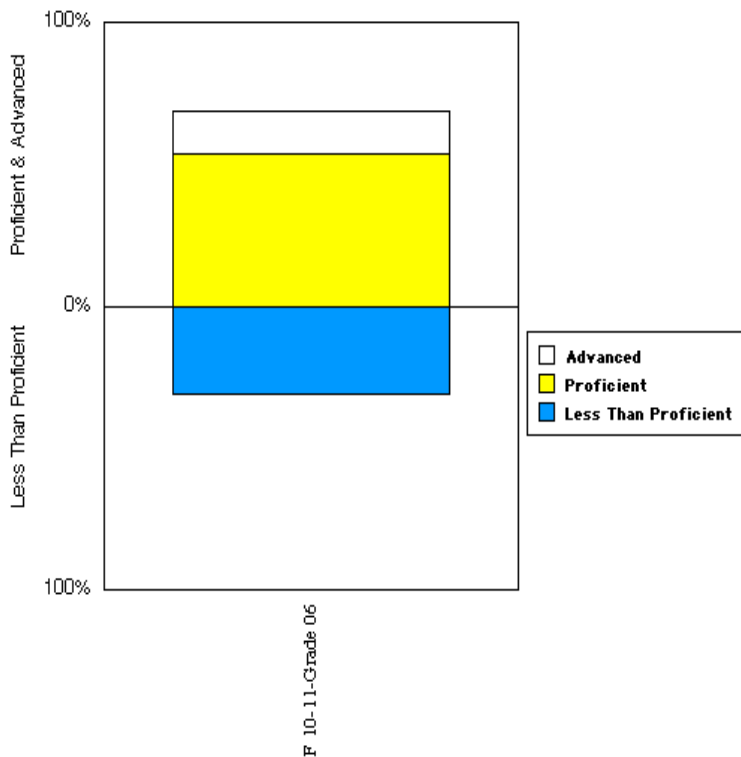
Low SES

14% not proficient  
 86% proficient  
 0% advanced

Not low SES

8% not proficient  
 71% proficient  
 21% advanced

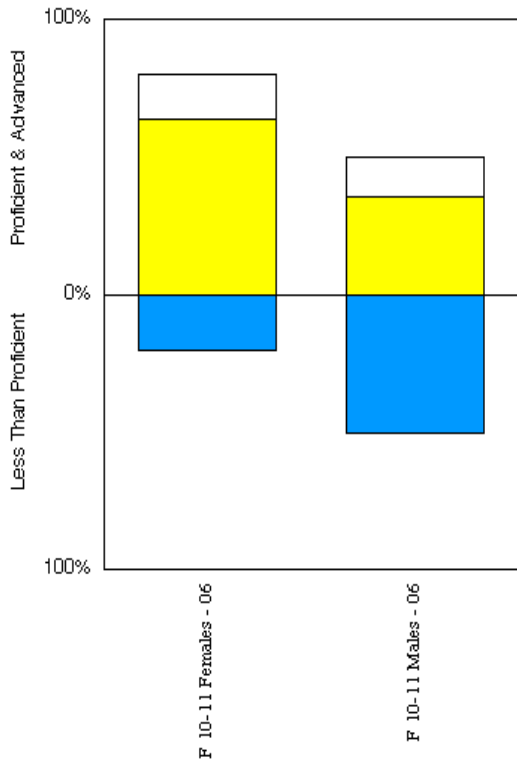
**Student Proficiency Graph**  
**Ed-Co - District-Wide**  
**ITBS/ITED Reading Comprehension**  
**Grade 06 All Students**  
**Students in District for Full Academic Year**



This graph represents all 2010-11 6<sup>th</sup> grade students' reading comprehension proficiency breakdown.

31% not proficient  
 54% proficient  
 15% advanced

Student Proficiency Graph  
 Ed-Co - District-Wide  
 ITBS/ITED Reading Comprehension  
 Grade 06 by Gender  
 Students in District for Full Academic Year



6<sup>th</sup> grade reading comprehension by gender.

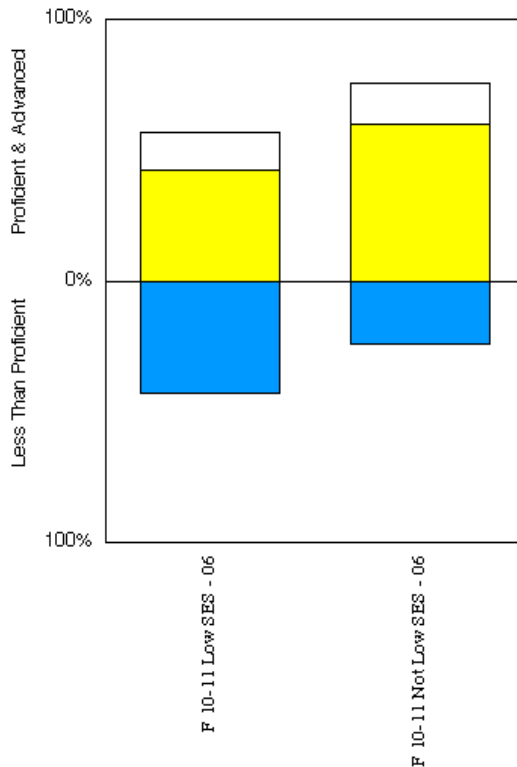
Girls

20% not proficient  
 64% proficient  
 16% advanced

Boys

50% not proficient  
 36% proficient  
 14% advanced

Student Proficiency Graph  
 Ed-Co - District-Wide  
 ITBS/ITED Reading Comprehension  
 Grade 06 by Socioeconomic Status  
 Students in District for Full Academic Year



6<sup>th</sup> grade reading comprehension by socioeconomic status.

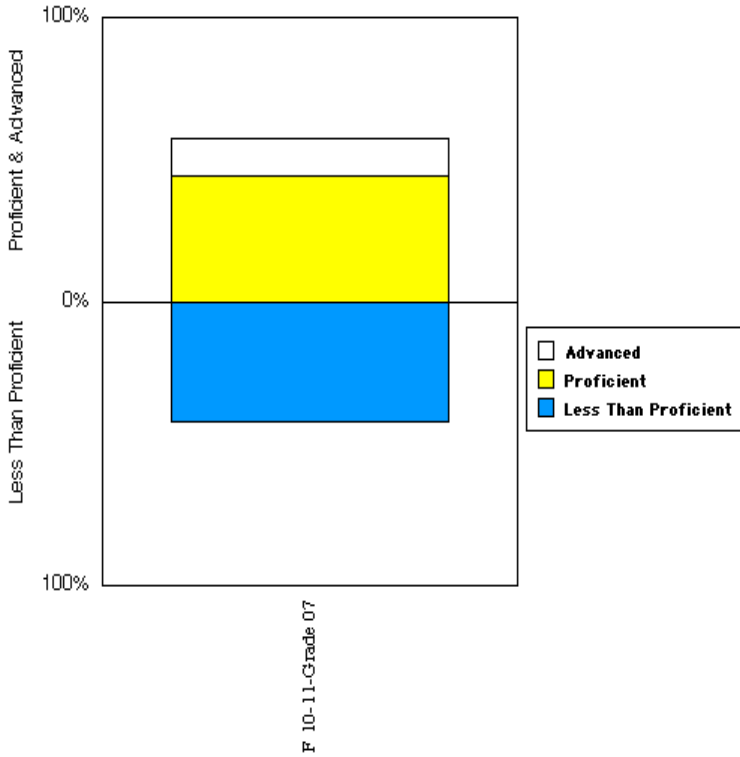
Low SES

43% not proficient  
 43% proficient  
 14% advanced

Not low SES

24% not proficient  
 60% proficient  
 16% advanced

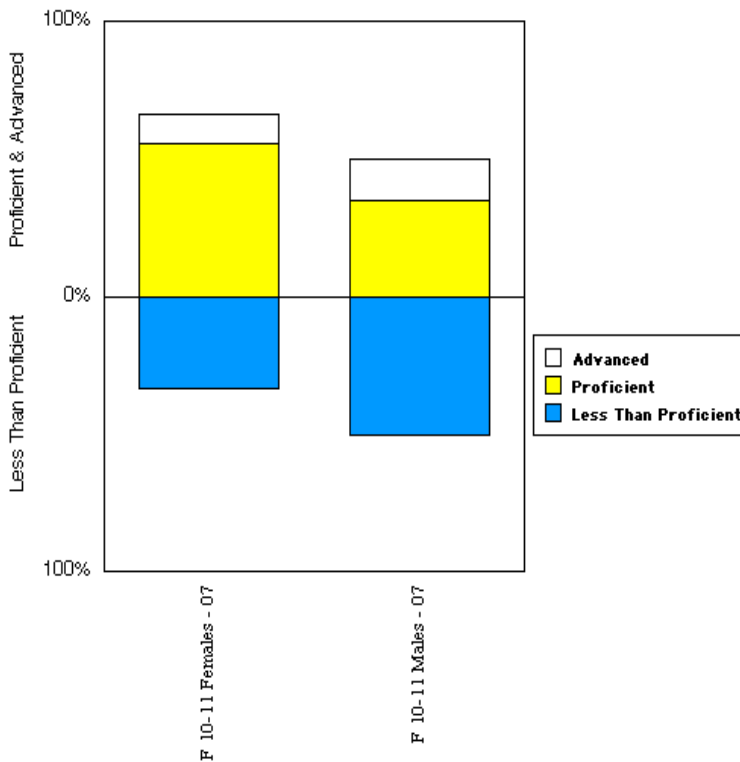
**Student Proficiency Graph  
Ed-Co - District-Wide  
ITBS/ITED Reading Comprehension  
Grade 07 All Students  
Students in District for Full Academic Year**



This graph represents all 2010-11 7<sup>th</sup> grade students' reading comprehension proficiency breakdown.

42% not proficient  
45% proficient  
13% advanced

**Student Proficiency Graph  
Ed-Co - District-Wide  
ITBS/ITED Reading Comprehension  
Grade 07 by Gender  
Students in District for Full Academic Year**



7<sup>th</sup> grade reading comprehension by gender.

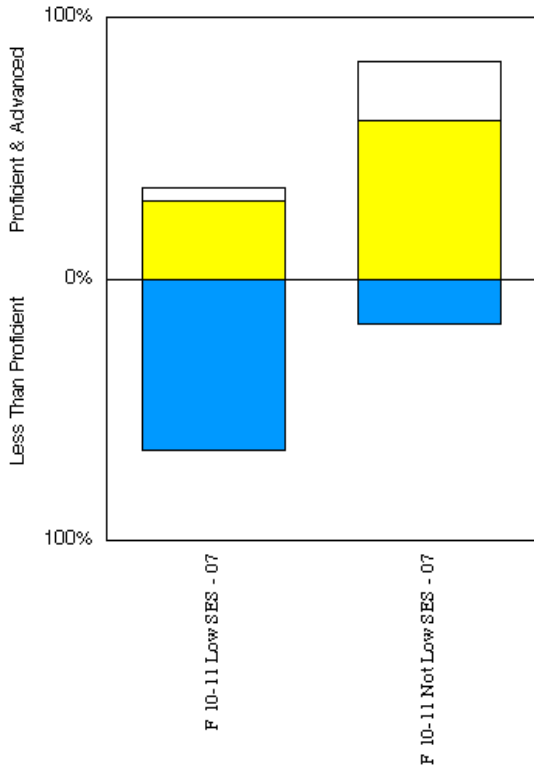
Girls

33% not proficient  
56% proficient  
11% advanced

Boys

50% not proficient  
35% proficient  
15% advanced

**Student Proficiency Graph**  
**Ed-Co - District-Wide**  
**ITBS/ITED Reading Comprehension**  
**Grade 07 by Socioeconomic Status**  
**Students in District for Full Academic Year**



7<sup>th</sup> grade reading comprehension by socioeconomic status.

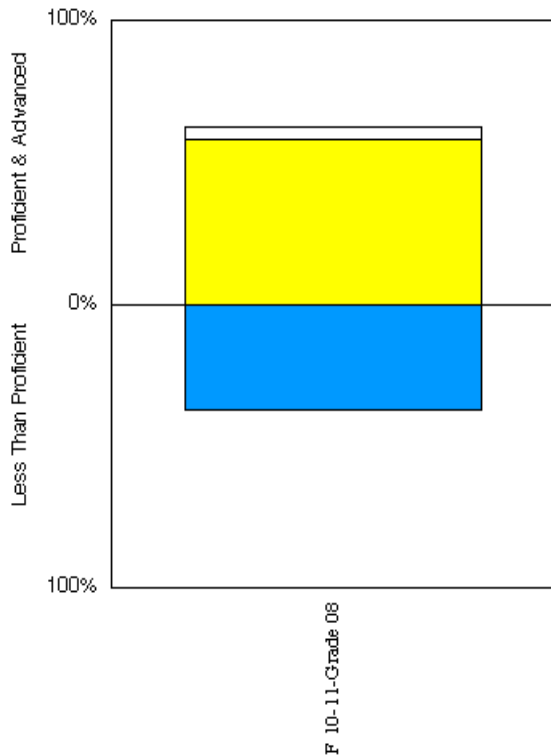
Low SES

65% not proficient  
 30% proficient  
 5% advanced

Not low SES

17% not proficient  
 61% proficient  
 22% advanced

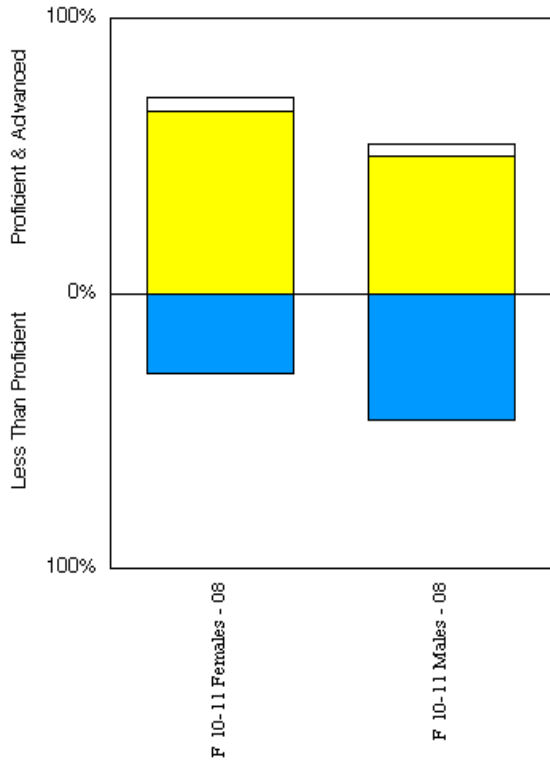
**Student Proficiency Graph**  
**Ed-Co - District-Wide**  
**ITBS/ITED Reading Comprehension**  
**Grade 08 All Students**  
**Students in District for Full Academic Year**



This graph represents all 2010-11 8<sup>th</sup> grade students' reading comprehension proficiency breakdown.

37% not proficient  
 58% proficient  
 5% advanced

**Student Proficiency Graph  
Ed-Co - District-Wide  
ITBS/ITED Reading Comprehension  
Grade 08 by Gender  
Students in District for Full Academic Year**



8<sup>th</sup> grade reading comprehension by gender.

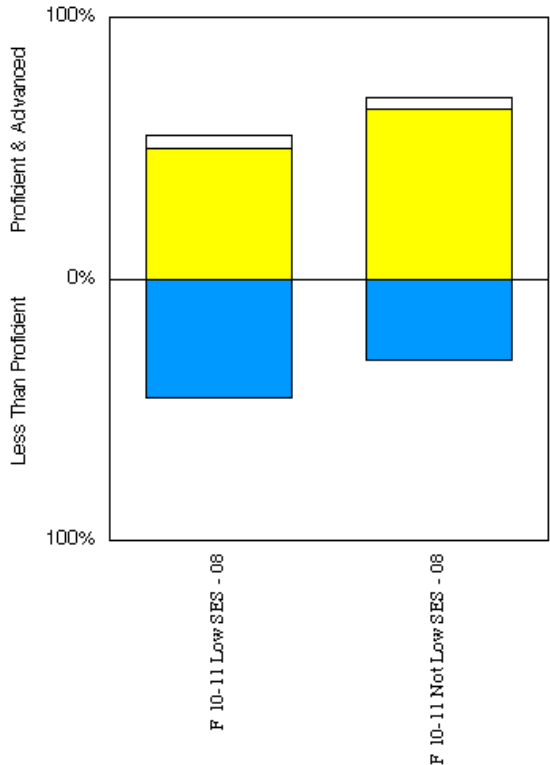
Girls

29% not proficient  
67% proficient  
5% advanced

Boys

45% not proficient  
50% proficient  
5% advanced

**Student Proficiency Graph  
Ed-Co - District-Wide  
ITBS/ITED Reading Comprehension  
Grade 08 by Socioeconomic Status  
Students in District for Full Academic Year**



8<sup>th</sup> grade reading comprehension by socioeconomic status.

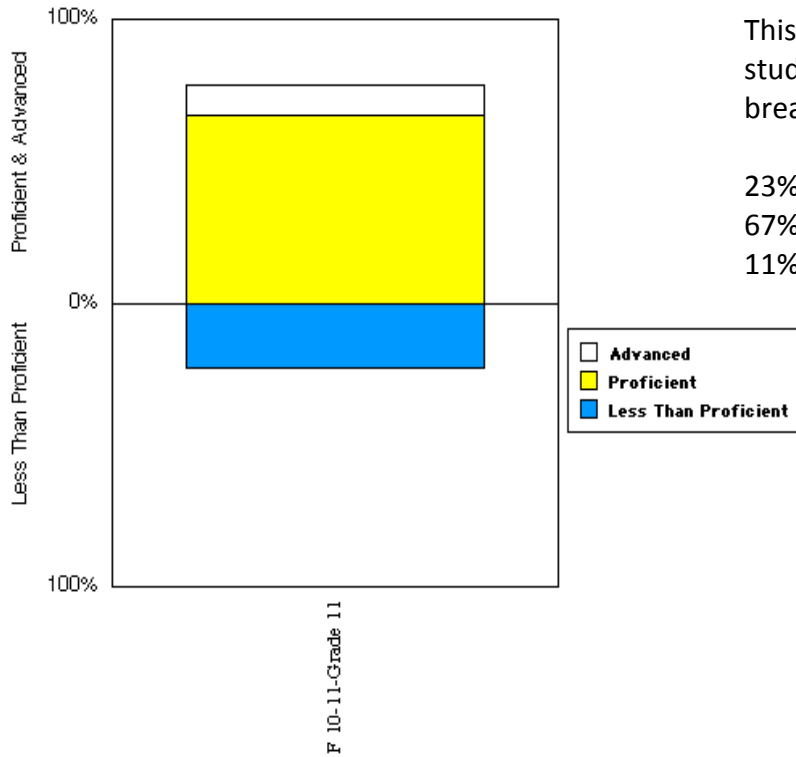
Low SES

45% not proficient  
50% proficient  
5% advanced

Not low SES

30% not proficient  
65% proficient  
5% advanced

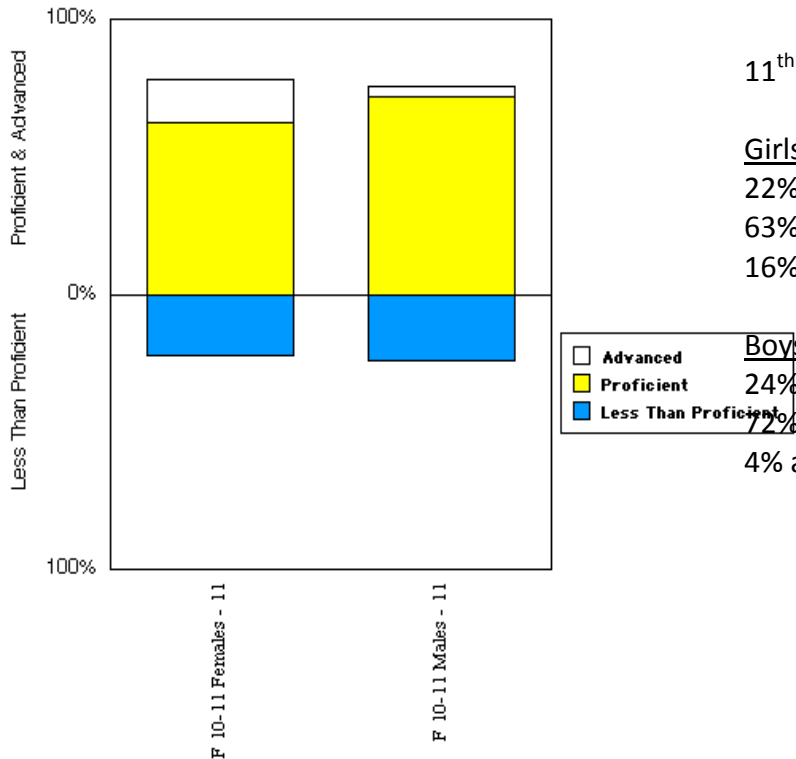
**Student Proficiency Graph  
Ed-Co - District-Wide  
ITBS/ITED Reading Comprehension  
Grade 11 All Students  
Students in District for Full Academic Year**



This graph represents all 2010-11 11<sup>th</sup> grade students' reading comprehension proficiency breakdown.

23% not proficient  
67% proficient  
11% advanced

**Student Proficiency Graph  
Ed-Co - District-Wide  
ITBS/ITED Reading Comprehension  
Grade 11 by Gender  
Students in District for Full Academic Year**

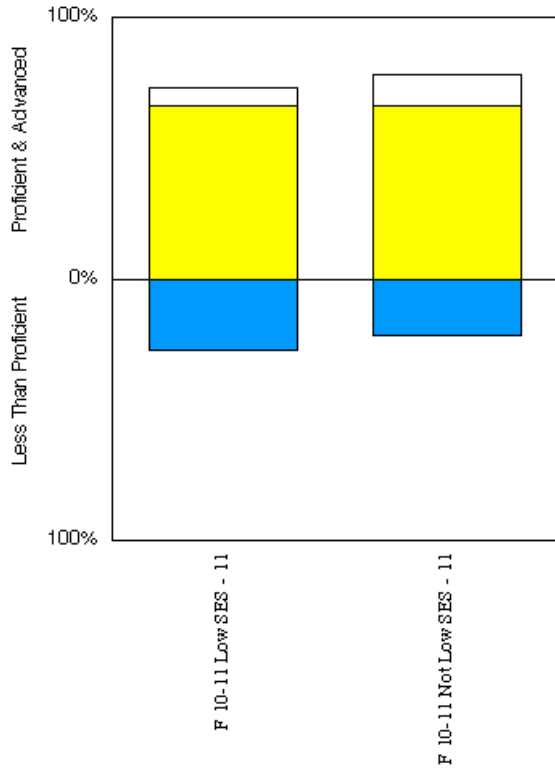


11<sup>th</sup> grade reading comprehension by gender.

Girls  
22% not proficient  
63% proficient  
16% advanced

Boys  
24% not proficient  
72% proficient  
4% advanced

**Student Proficiency Graph  
Ed-Co - District-Wide  
ITBS/ITED Reading Comprehension  
Grade 11 by Socioeconomic Status  
Students in District for Full Academic Year**



11<sup>th</sup> grade reading comprehension by socioeconomic status.

Low SES  
27% not proficient  
67% proficient  
7% advanced

Not low SES  
21% not proficient  
67% proficient  
12% advanced

